

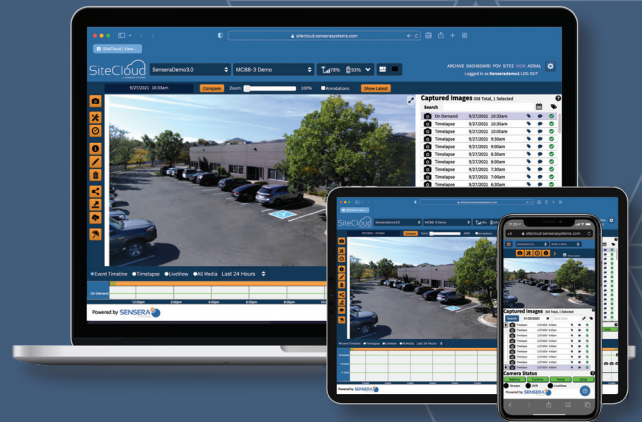
SiteCloud

Cloud-based Remote Site Monitoring Software & Service

Real-time Comprehensive Data Collection and Monitoring

Cloud-based Software & Service for Sensera Cameras

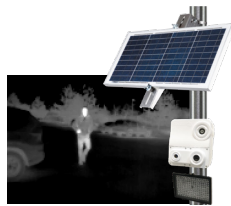
All Sensera jobsite solutions are powered by Sensera's SiteCloud platform which provides easy-to-use, 100% web-based software for viewing, monitoring, and sharing real-time site data, detecting actionable insights, and simplifying workflow. SiteCloud is a turn-key cloud hosted application supporting both WiFi and cellular connectivity and provides secure storage and backup of project data, live public URL capability, video streaming relay and time-lapse video generation all at a low monthly cost.



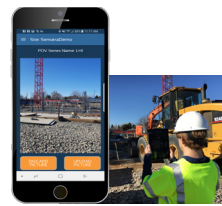
SiteCloud is tightly integrated with Sensera's complete line of jobsite cameras, mobile apps, and SiteCloud-AERIAL™ drone photography services to provide a comprehensive solution for progress monitoring, collaboration, safety and security. SiteCloud service includes WiFi and 4G LTE connectivity making it a true end-to-end solution. Integrations with Procore®, Autodesk Construction Cloud, and PlanGrid simplify and automate workflow across the enterprise.



Fixed Cameras



Security Cameras



Mobile Devices



Drone Photography

SiteCloud Features & Benefits

- 100% Web-based Interface
- View from any PC, Phone, or Tablet
- Automated Time-lapse Generation
- Public URL for Camera, Image Sharing
- Secure Cloud Data Archive and Backup
- Secure Storage of Project Data, Download Anytime
- DVR Scheduled Recording, Find/Retrieve, Upload
- Secure, Simultaneous Multi-user Access
- Assign Permission Levels
- Automated Photo Management
- Transparency with Project Owners, Stakeholders
- LiveView Real-time Site Monitoring
- As-built Documentation, Monitor Progress
- Live Video Streaming
- Image Capture, Tagging, Commenting
- Site Security Monitoring
- Motion-based Alert/Alarm
- Capture Important Incidents

Real-time Comprehensive Data Collection and Monitoring

SITECLOUD FEATURES

Graphical Interface	Simple menu-based configuration
Camera Setup	Automated discovery, camera configuration
Camera Admin/Monitoring	Administer and manage camera from any web enabled device. Multi-user, 24/7 access
Live Imaging	On-demand real-time still images
Live Video Streaming	View live video from any web enabled device. 7-day image history for situational awareness.
Schedule Image Capture	Configure scheduled image capture by frequency, hours of day, days of week.
Search, View Images	Search by date or project.
Annotate and Compare	Compare images and create notes.
Time-lapse	Create automated and on-demand time-lapse video with the click of a button. View and download anytime.
Location Mapping	Automated display of camera location on map.
Data Export	Share/export images/video by type and date.
Notifications	Camera status notifications by text, email.
Motion Alerts (SiteWatch)	Real-time motion detection alerts via text, email.
Weather	Weather data captured with each image.
Read-only Logins	Multiple permission levels for "read-only" logins.
Public Access URL	Customizable web-page and URL to share project images/video. Can be embedded on websites.
Workflow Integrations	Integrated with popular project management software including: Autodesk Construction Cloud Procore and PlanGrid.
Project Updates	Automated daily/weekly emailed image updates to project team/stakeholders.
Camera Health Monitor	Real-time monitor of battery, power and communications.
Data Usage Monitor	Estimator and actual month-to-date data usage.

ORDERING

Various plans available. See Pricing and Ordering sheet for details See "Terms & Conditions" for details of service terms.

Made in the USA
SPECIFICATIONS SUBJECT TO CHANGE
Images are for illustration purposes only

SITECLOUD SERVICE

Use of SiteCloud Service (fully hosted), cellular data, onboarding and technical support, data archival, unlimited users, unlimited Storage, SitePOV app (unlimited)

IMAGE CAPTURE & PHOTO MANAGEMENT

Image Naming	Name each image to identify unique events
Image Tagging	Assign a searchable tag to an image to create a group
Image Captioning	Caption an image with important details
Photo Management	Manage all fixed camera and mobile upload images within SiteCloud

SYSTEM REQUIREMENTS

Web Browser	HTML5 compliant browser (IEV9+, Firefox V30+, Chrome V27+, Safari V5.1+ Opera V23+)
Video Streaming	MJPEG or H.264

SECURITY

Login	HTTPS secure login for WebApp
Security	Unique client-initiated communications secures access, limits DoS attacks
Addressing	Camera does not require static IP address. Registering cameras with WebApp account only requires camera serial number.
Firewall/Router	Camera access operates across firewalls/routers with no configuration changes typical

CLOUD HOSTING PLATFORM

Cloud Platform	Amazon Web Services (AWS)
-----------------------	---------------------------

DATA ARCHIVAL & ACCESS

Storage: Time-lapse images	Unlimited - during service; uploaded DVR video/images retained for 10-years after project completion
Storage: LiveView Archival & Access	Unlimited - retention for 7 days Secure archival of images, DVR clips, Time-lapse video. User access/download/export of data anytime

NETWORK SERVICE

Cellular	4G LTE access. 1-20GB data plans. T-Mobile, ATT, Verizon (USA) Telus and Rogers (Canada)
WiFi	802.11 b/g/n