

Reconstruct & Sensera Systems Announce Key Partnership

Advanced integration enables users to validate quality and avoid rework

Why Use Reconstruct and Sensera Together?

City restrictions and FAA regulations often prohibit the use of drone flights over construction sites, making it challenging for project managers to collect vital site imagery.

Key Benefits of the Reconstruct™ and Sensera Integration:

- Captured images are automatically pushed from Sensera’s SiteCloud into Reconstruct’s ‘Visual Command Center’, cutting cost and time and avoiding manual user involvement.
- Drawings and models can be aligned and overlaid against photos which help validate quality and avoid rework.
- The integration fully supports Reconstruct workflows on progress and safety monitoring.

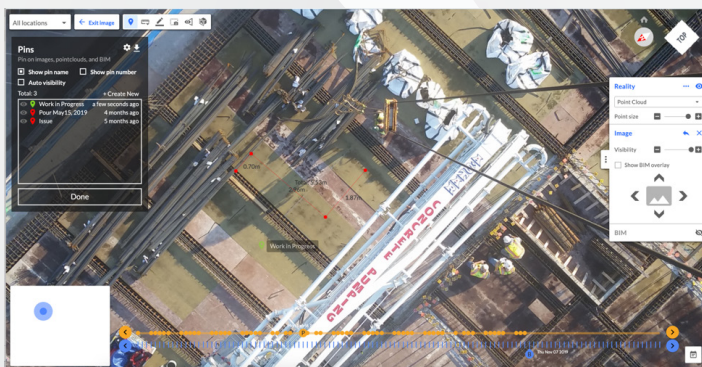


Image captured by Sensera Systems camera and ingested by Reconstruct

How it Works

1 SENSERA MC88 CAMERA IS MOUNTED ON A CRANE/JIB OR TROLLEY



2 HIGH-RESOLUTION IMAGERY IS CAPTURED ACROSS THE SITE AND AUTOMATICALLY SENT TO RECONSTRUCT THROUGH SITECLOUD API INTEGRATION



3 AN AUTOMATIC MAPPING OF REALITY AGAINST 2D DRAWINGS ENABLES USERS TO VALIDATE QUALITY



4 AN AUTOMATIC MAPPING OF REALITY AGAINST 3D OR 4D BIM ENABLES USERS TO VALIDATE QUALITY AND PROGRESS

