

# SitePOV Mobile App

Automated As-built Image Capture and Photo Management

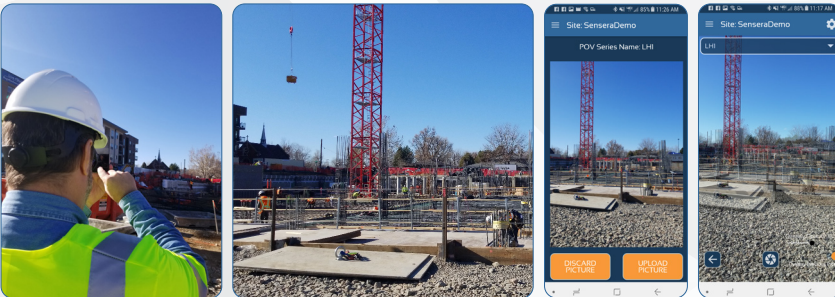
## Automated As-Built Image Capture and Photo Management

Capturing accurate, timely, as-built photo documentation of your construction project is an important best-practice in construction management. SitePOV provides a powerful tool for your entire construction team to capture site progress images on-the-fly, while having management of those images fully automated by SiteCloud.

SitePOV extends your SiteCloud and camera system by automating the capture of detailed, repeatable, tagged images from around the jobsite. Users can capture images and they will be automatically uploaded and organized instantly in your SiteCloud account alongside your fixed camera time-lapse images.

## Unique Multi-Viewpoint Time-lapse Feature

Photographic documentation of your project can be greatly enhanced with a time-lapse to quickly and easily see the evolution and sequencing of that portion of the build. However, when taking images each day/week from a mobile device this becomes problematic when each subsequent picture is taken from a different vantage point. SitePOV solves this problem with an innovative interface that organizes image capture by location and viewpoint, and then helps you align your picture with the last pictures taken from that location and viewpoint. By overlaying the last image from that location semi-transparently, you can ensure your new image exactly aligns with previous images. This enables you to create accurate time-lapse sequences of important build details.



Images are available in SiteCloud as virtual 'cameras' that you can view, archive, compare etc. right along side all the images coming from your fixed jobsite cameras. By utilizing SitePOV you take advantage of powerful SiteCloud features for all your mobile captured images including public URL sharing, automated time-lapse generation, image compare and markup, export to desktop or Autodesk BIM 360, and long term archival. SitePOV images are also fully georeferenced for future integration and display with maps or BIM models.

## Key Features & Benefits

- Leverage SiteCloud to archive all site photography
- Instant upload to SiteCloud as images are taken
- Automated tagging, organizing and upload of site images taken on mobile devices
- Entire team can capture site images at any time and share through SiteCloud
- See build sequence with mobile-captured time-lapse
- Unique image alignment tool to ensure images can be compared over time
- All images automatically timestamped and 6D georeferenced
- All team images organized in one place automatically

## Uses of SitePOV in Documentation Process

SitePOV can be used in a number of ways to support project photo documentation and project management goals.

- Capture specific viewpoints around the site
- Align SitePOV captured images with fixed site camera images
- Take unlimited a la carte images for markup and sharing.

## How it Works

SitePOV lets you create a 'SitePOV Series' which is a series of images taken from a specific location and viewing angle. SitePOV along with SiteCloud keeps your images organized by these SitePOV Series. You can then return to any location at anytime to capture more images from that same location/viewpoint. The image alignment feature allows you to quickly ensure that the new image aligns exactly with the last one. This allows seamless time-lapse generation, and comparing images over days or weeks of the project. You can create as many SitePOV Series as you wish to fully document your site. Images within a SitePOV Series can be taken at any frequency, to support documentation and sharing goals. Images are uploaded immediately to SiteCloud as they are taken.

# SitePOV Mobile App

Automated As-built Image Capture and Photo Management

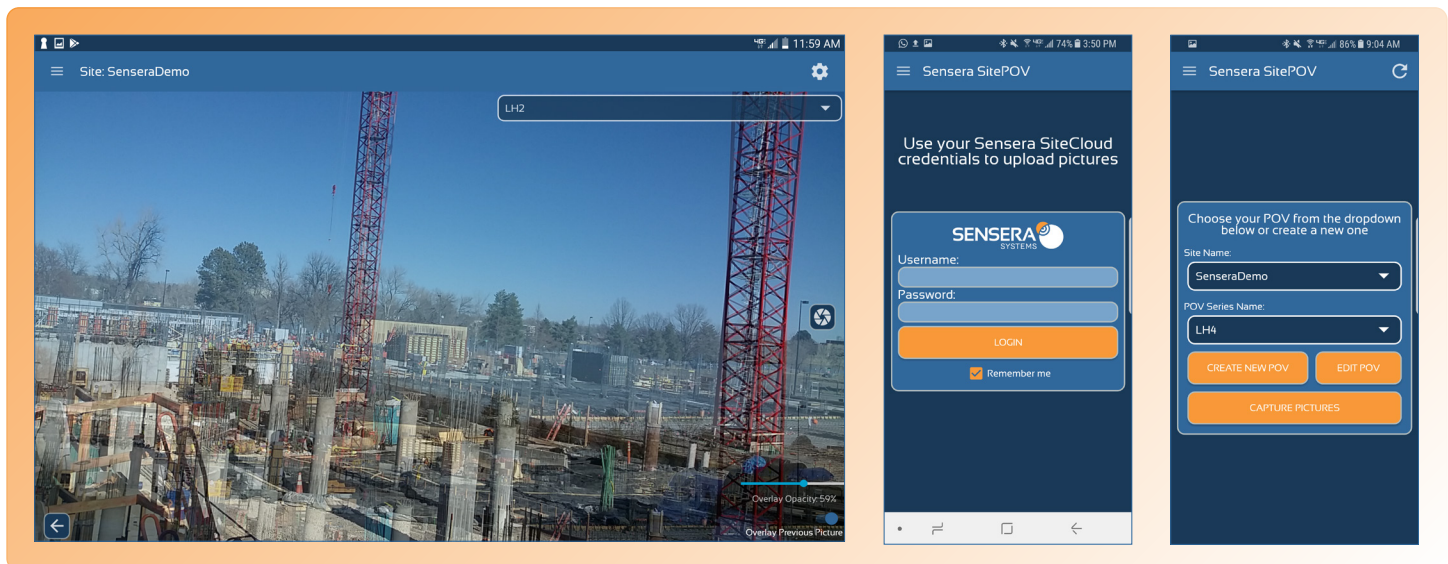


## SitePOV App

- 6D geo-referenced, timestamped image capture from mobile device
- Automatic upload to SiteCloud account
- Capture images for any SiteCloud defined project/site
- Create new SitePOV Series
- Add picture to SitePOV Series
- Align image capture with previous image for that SitePOV Series
- Change transparency of alignment overlay image
- Edit Site/Project Name
- Edit SitePOV Series Name
- Delete SitePOV Series
- Change resolution of images to be captured

## SiteCloud Features for SitePOV Captured Images

- Automated time-lapse generation
- Custom time-lapse generation
- Search image by time/date
- Annotate image
- View Image
- Image markup
- Image compare
- Archive (end of project)
- Public URL sharing
- Export
- Share images, time-lapse videos
- Integrations with 3rd party Construction software including: Autodesk BIM 360, Procore, NoteVault, Spectrum
- Display SitePOV Series locations on SiteCloud Sites Map



## Setup and Usage

SitePOV can be downloaded to any compatible smartphone or tablet. Simply log into SitePOV with your SiteCloud credentials to automatically link your SitePOV App with your SiteCloud account. Create a SitePOV Series and begin taking pictures. Images will be automatically uploaded to your SiteCloud account.

## Supported Systems

iOS 9 and higher  
Android 4.3 (Jelly Bean) and higher  
Available on Google Play and Apple App Store



SPECIFICATIONS SUBJECT TO CHANGE  
Images are for illustration purposes only

Made in the USA